

De-Constructing Ritchie

Group 1

Anoushka, Garima, Ponsuganth,
Neha, Sajusha

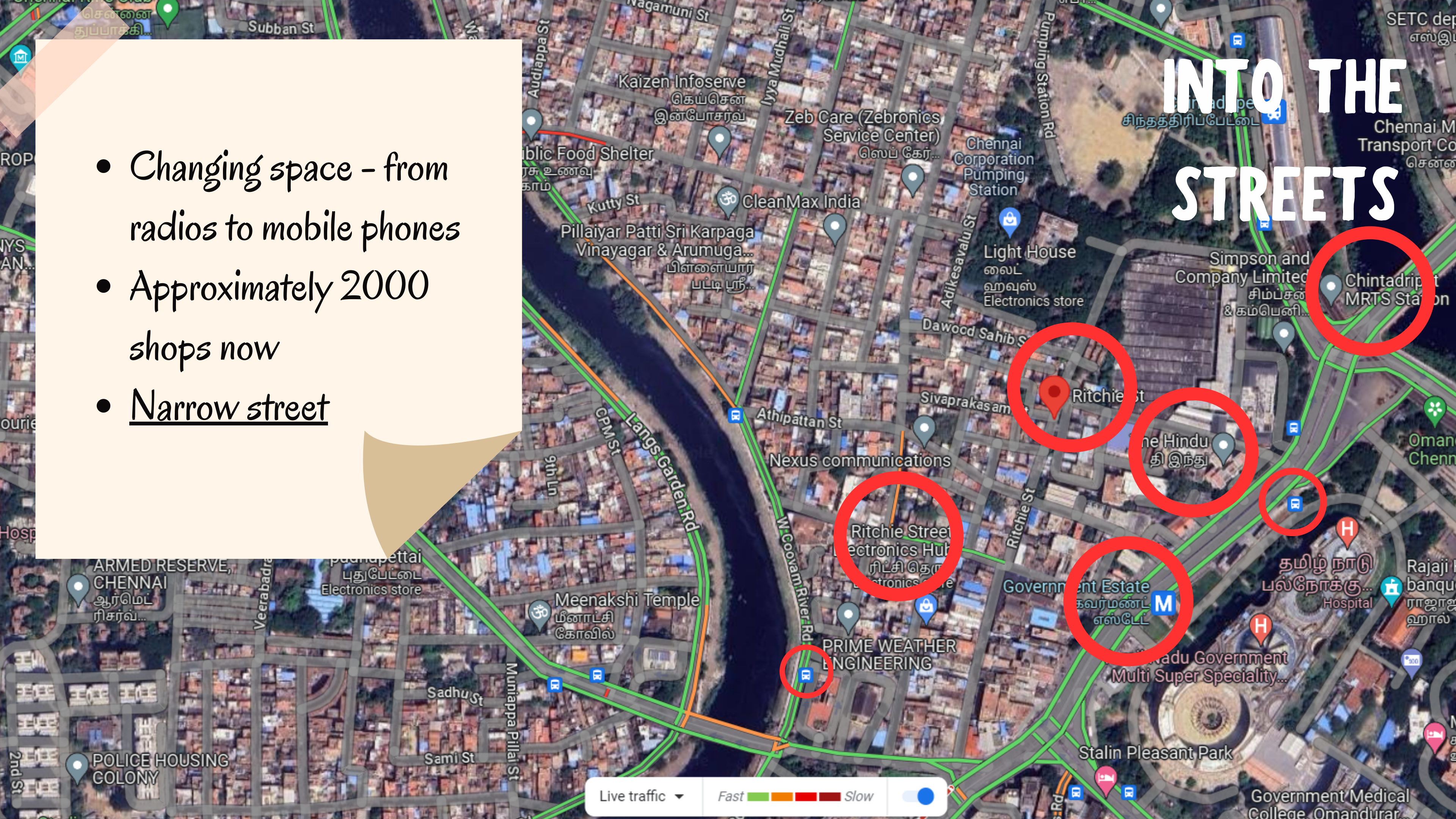


DISCUSSION POINTS

- Into the Streets
- Interrogating Cartographic Thinking
- Informality
- Street Vendors and Regulation
- Ethnic Commerce

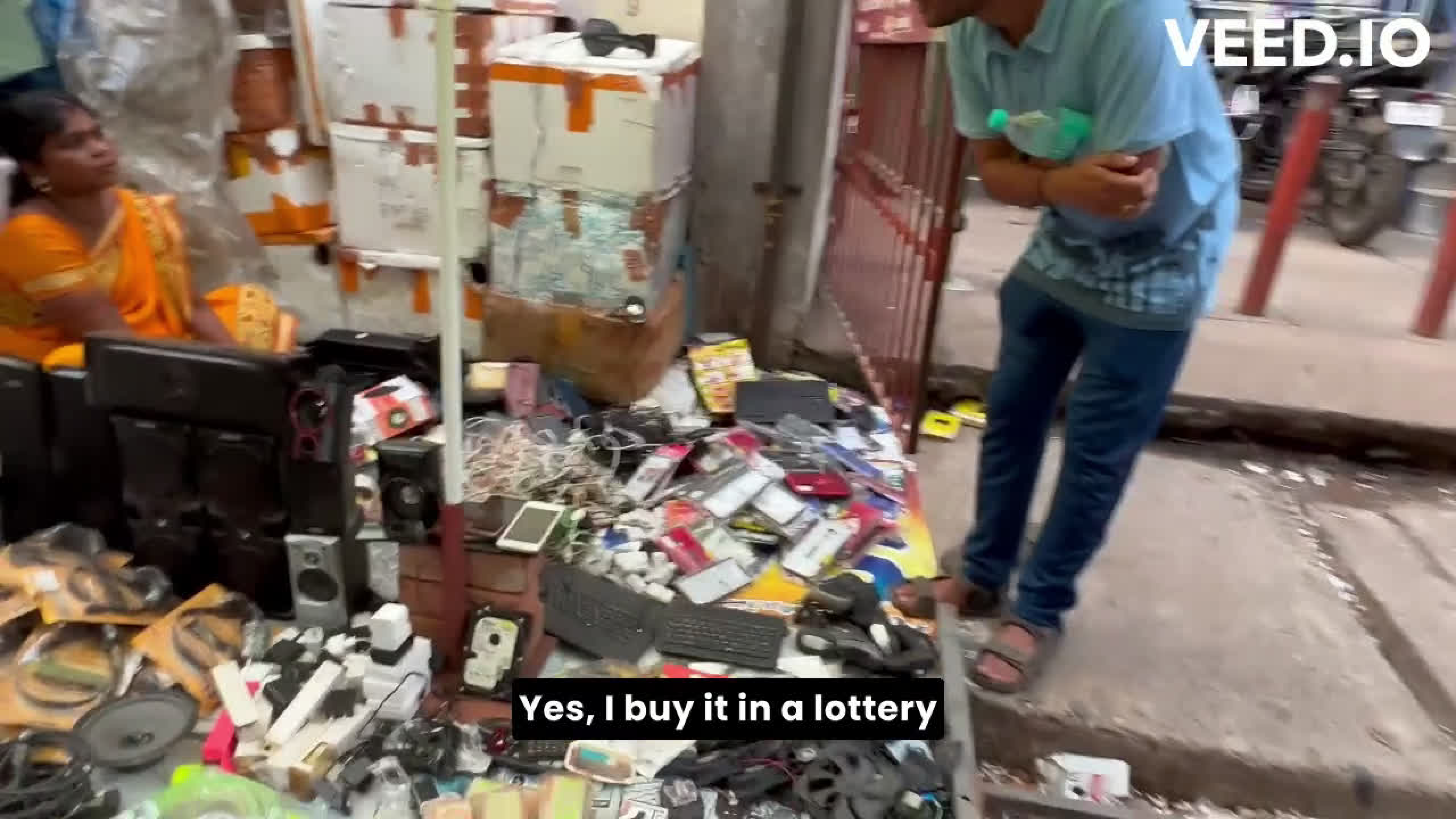
- Changing space - from radios to mobile phones
- Approximately 2000 shops now
- Narrow street

INTO THE STREETS









Yes, I buy it in a lottery

Bluetooth
Neck
Band
250/-

**MOBILE & LAPTOP
SERVICE**

எம் ஒன்

M M ONE

**MOBILE ACCESSORIES SALES SERVICE
WHOLESALE**

SERVICE CENTRE

SETHIA INFOTECH
a hua
COMPUTER SUPERSTORE
NO. 31, WALLERS ROAD, MOUNT ROAD, CHENNAI 600002

IT & SERVICE AUTOMATION PVT LTD
COMPLETE IT HARDWARE & SURVEILLANCE UNDER ONE ROOF
DISTRIBUTORS / STOCKISTS FOR THIS BELOW REPUTED AND VALUABLE BRAND
HP CANON EPSON SAMSUNG Microsoft PRAM
SEAGATE FUJIFILM NETGEAR LG ASUS YOCO
NO. 31, WALLERS ROAD, MOUNT ROAD, CHENNAI 600002

HIKVISION





Temporal Variations:

- Discovered a notable transformation in the street's ambiance throughout the day.
- Previous visits in the morning contrasted with a distinct evening atmosphere.

Informality in Business and Education:

- Evidence of informality in business operations, including avoidance of UPI and circumventing GST regulations.
- Informal education and training in the tech sector, challenging conventional notions of skill acquisition and development.

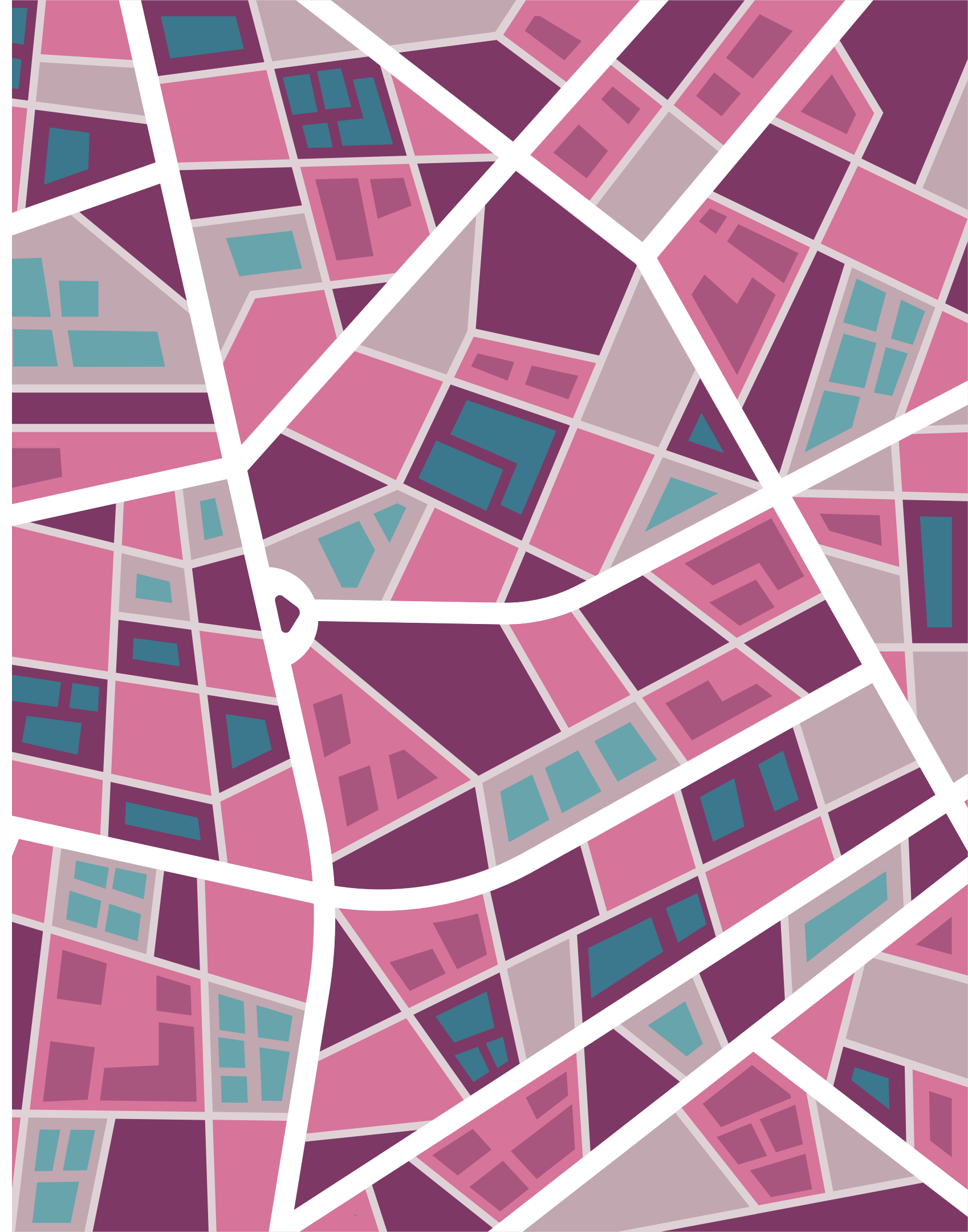


Street Vendors and Regulation:

- Those who choose to operate without licenses adapt by being mobile, challenging the regulatory framework.
- The daily need to earn a living influences how street vendors navigate their spatial locations, sometimes operating at the margins of the central city, but not solely bound by state-imposed limitations.
- It consecrates the distinction between authorized and unauthorized street users, reshaping the dynamics of who belongs in urban spaces.

Interrogating cartographic thinking

- Moving away from fixations with lanes
- Visualising the lived space
- An economic cartography?
- Informality as vitalising - flow of materials- modernity?
- Link between built environment and character of activity?

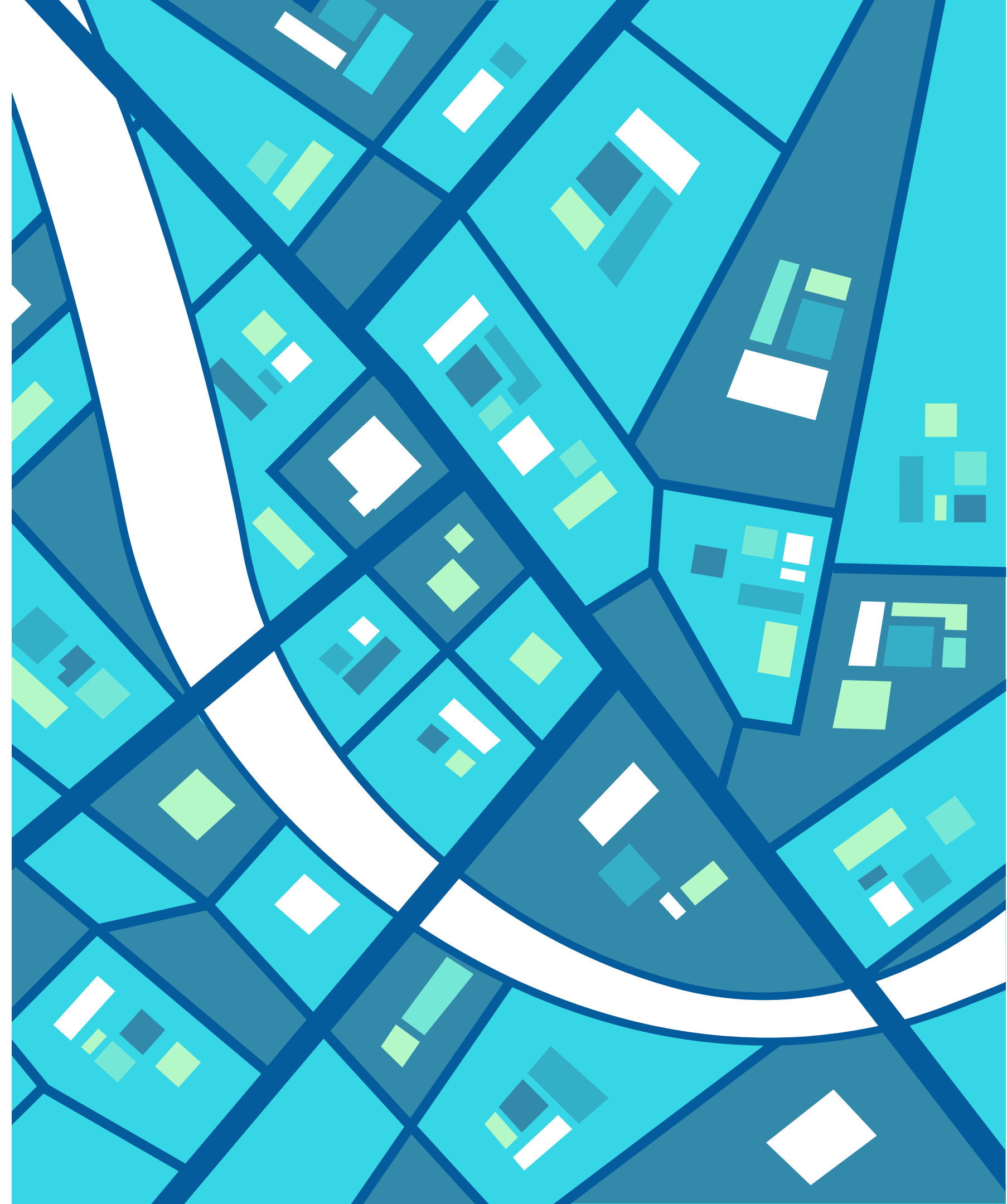


Ethnic commerce

Yiwu and Sowcarpet

Social embeddedness

- Logic of profit-making; social difference overstated
- Interviews - underplayed ethnic diversity
- Ethnic legitimacy through commerce?
- Transnational vs national entrepreneurship



Bibliography

- Aiyer, Sophie M., Marc A. Zimmerman, Susan Morrel-Samuels, and Thomas M. Reischl. 2014. 'From Broken Windows to Busy Streets: A Community Empowerment Perspective'. *Health Education & Behaviour* 42 (2): 137–47. <https://doi.org/10.1177/1090198114558590>.
- Correspondent, Special. 2020. 'Ritchie Street Shoppers Park on Anna Salai, Hinder Traffic Flow'. *The Hindu*, 27 May 2020, sec. Chennai. <https://www.thehindu.com/news/cities/chennai/ritchie-street-shoppers-park-on-anna-salai-hinder-traffic-flow/article31690605.ece>.
- Kaur, Amanpreet, and Madhuralakshme R. 2014. 'All We Hear Is Radio Ga Ga'. *The Hindu*, 2 June 2014, sec. Society. <https://www.thehindu.com/features/metroplus/society/all-we-hear-is-radio-ga-ga/article6075257.ece>.



Thank you! ✦